

Strengthening Neighborhoods and Blueprint Denver

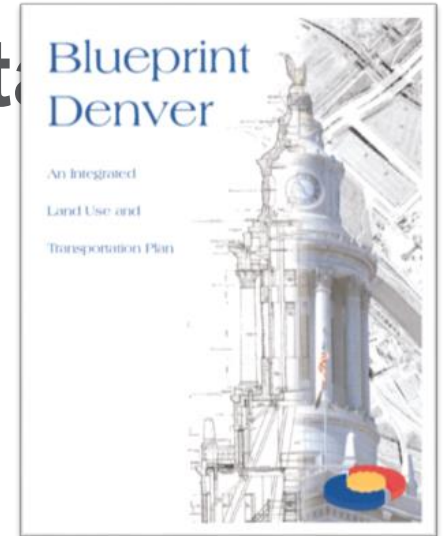
June 19, 2017

Denveright.
Your Voice. Our Future.



Main Purpose for Today's Presentation

- What is Blueprint Denver?
- How has Denver grown?
- How did we get to where we are today?
- How might this growth impact/relate to student enrollment?



Four Plans Working Together to Make One City

Denverright.

Parks Game Plan

Denverright.

Denver Moves: Transit



Denverright.

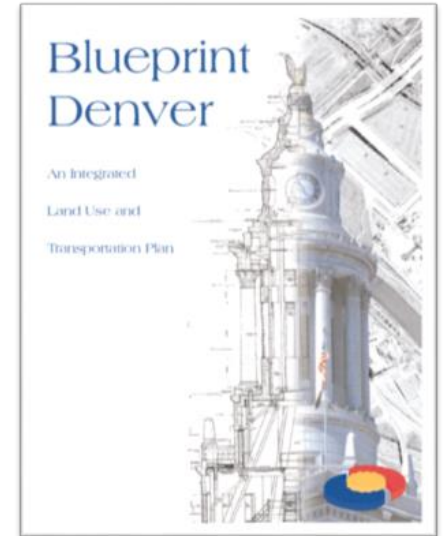
Blueprint Denver

Denverright.

Denver Moves: Pedestrians & Trails

What is Blueprint Denver?

- “**Big Picture**” view on how our community values inform how a future Denver looks, feels, and functions
- Establishes **policy direction** on land use, transportation and urban design
- **Strategy** for future growth

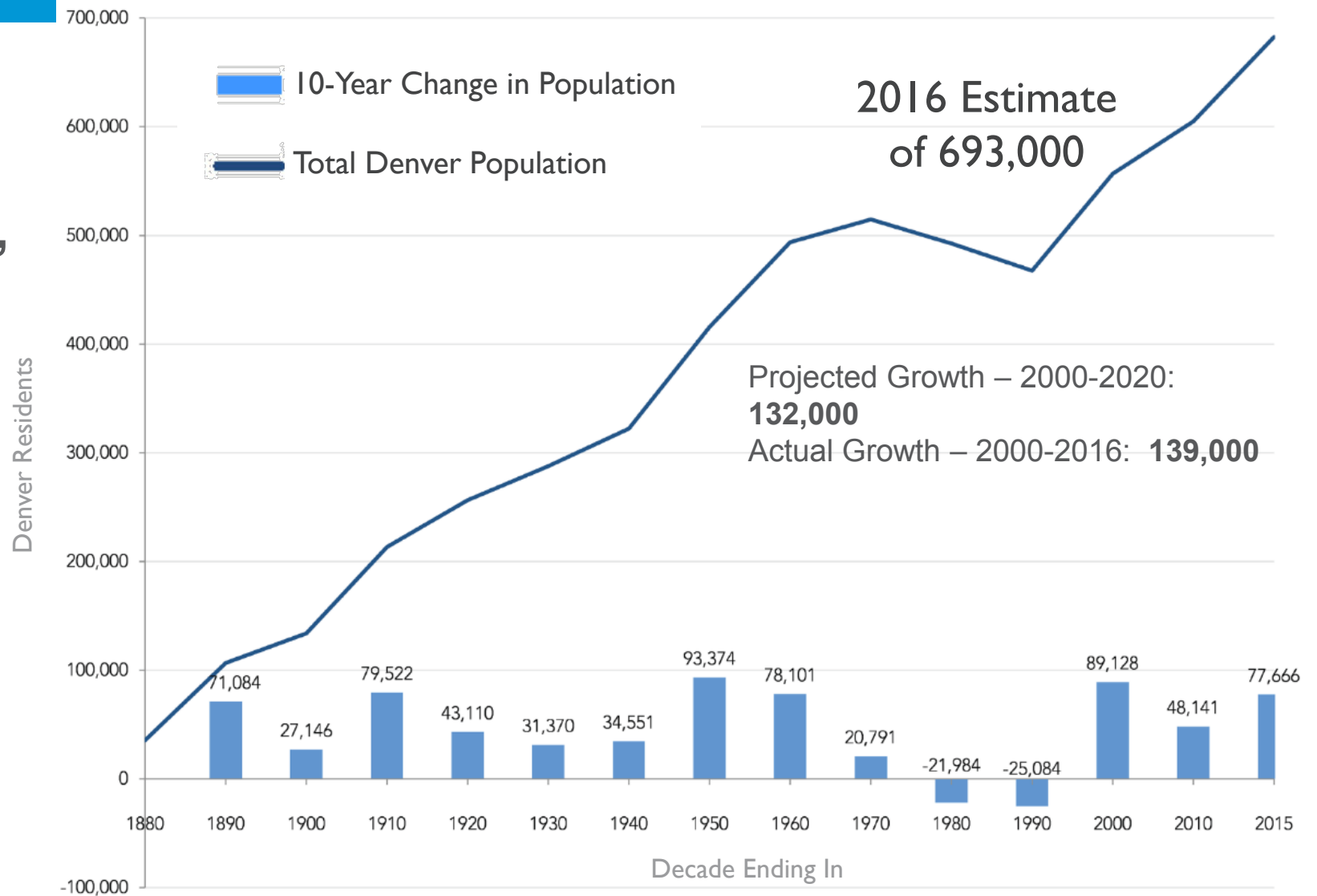


Why plan now?

Denverright

- Denver has **evolved** considerably in the **past 15 years** and needs policy updates related to
 - Land use;
 - Mobility; and
 - Parks and recreation
- Time for a **fresh look** that accounts for today's social, environmental, and economic realities

Denver Population by Decade, 1880 to 2015



Denver as Portion of Region

**2015 Regional
Population:**
3,181,228

**2015 Denver
Population:**
682,500
Denver as
Portion of
Region:

21%



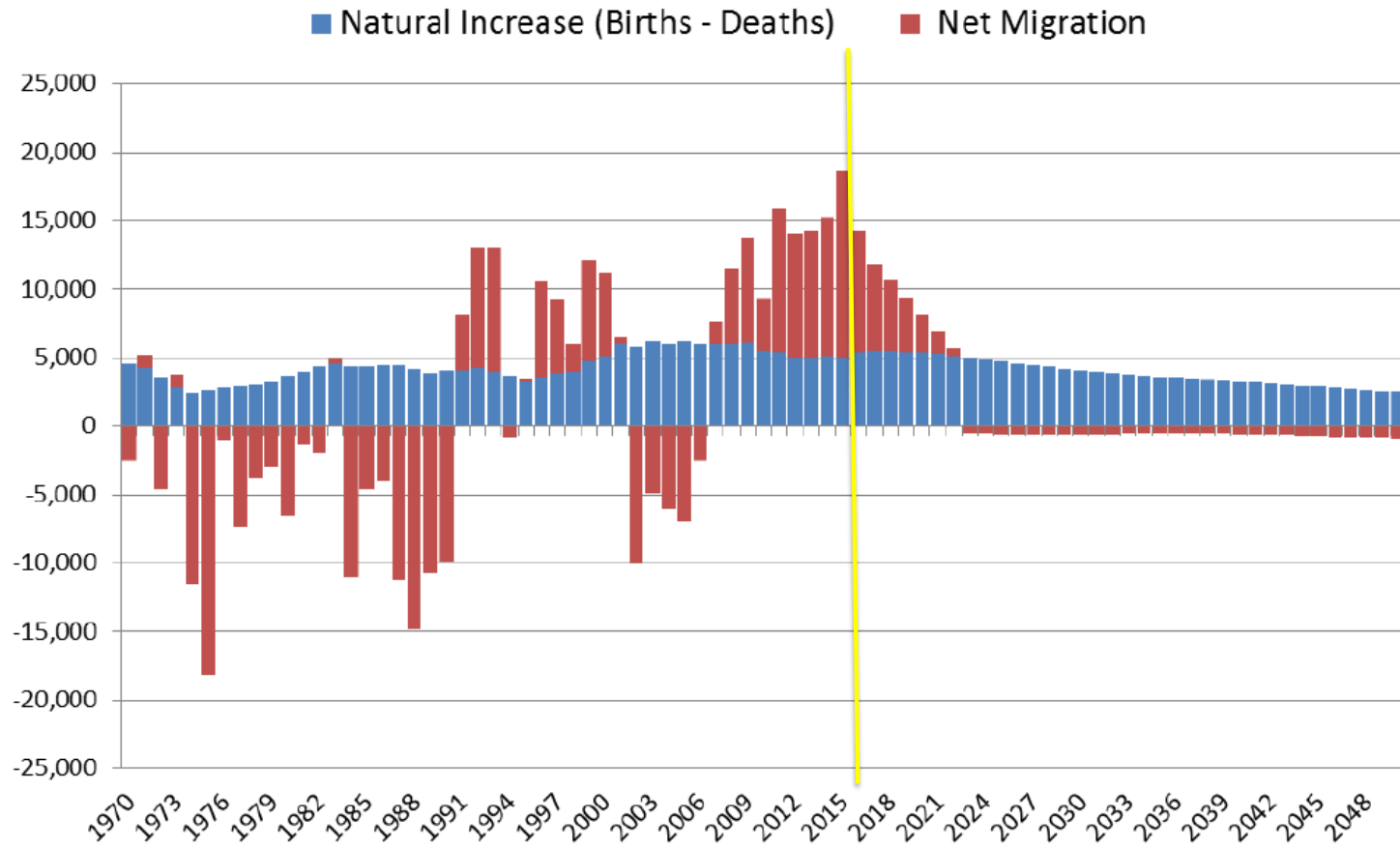
**2040 Regional
Population:**
4,355,079

**2040 Denver
Population:**
812,000

Denver as
Portion of
Region:

19%

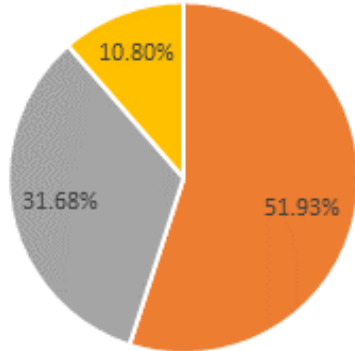
Denver Population Change 1970-2050



Data Source and Graphic:
Colorado State Demography Office; DOLA

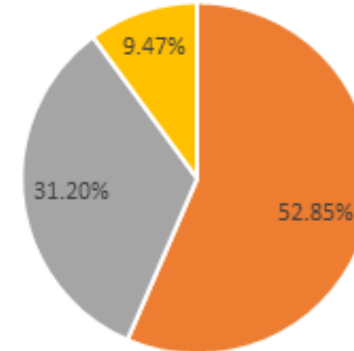
Population Change by Race in Denver 2000-2014

Percent of Total (2000)



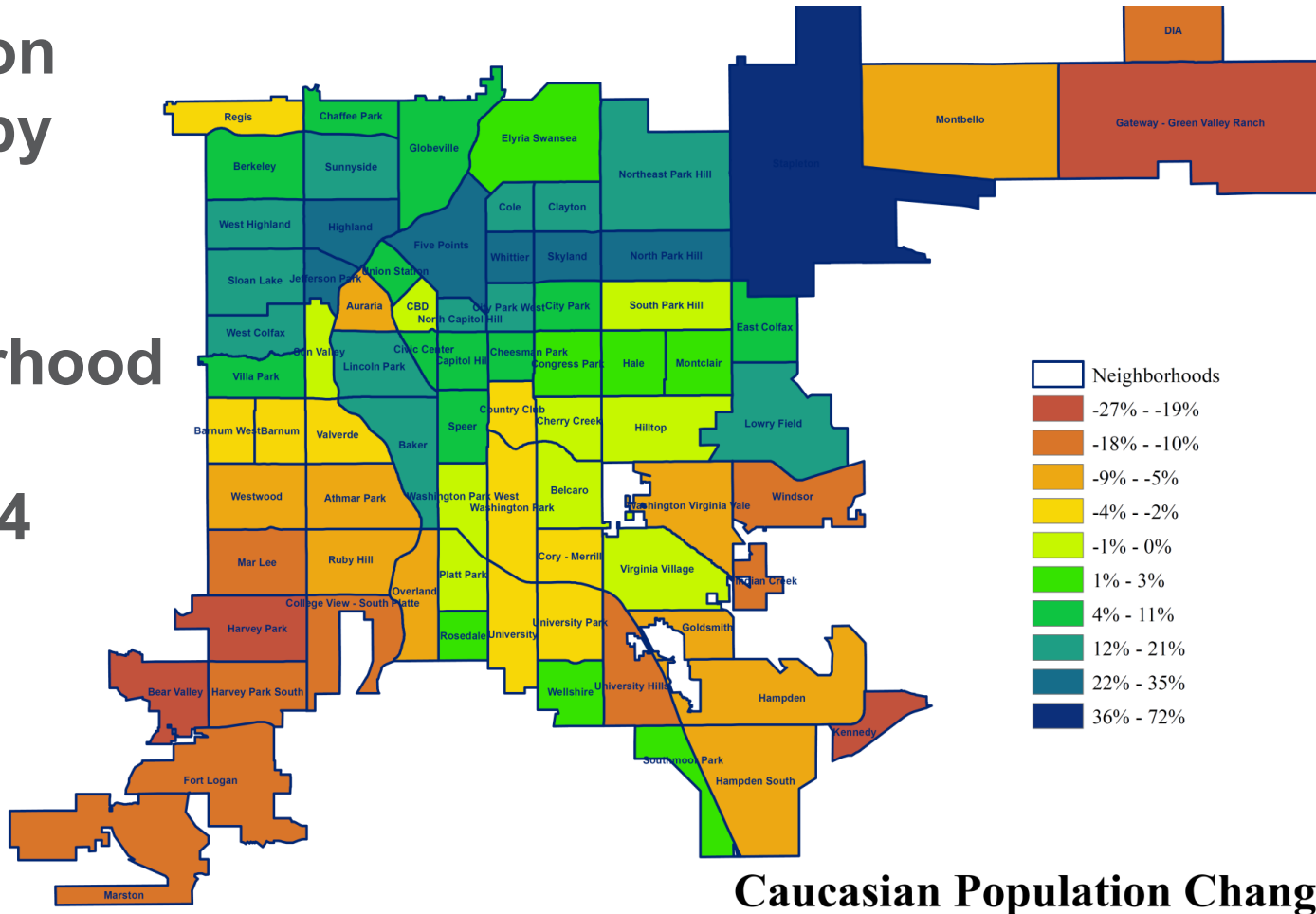
■ Caucasian Population ■ Hispanic Population ■ African American Population

Percent of Total (2014)

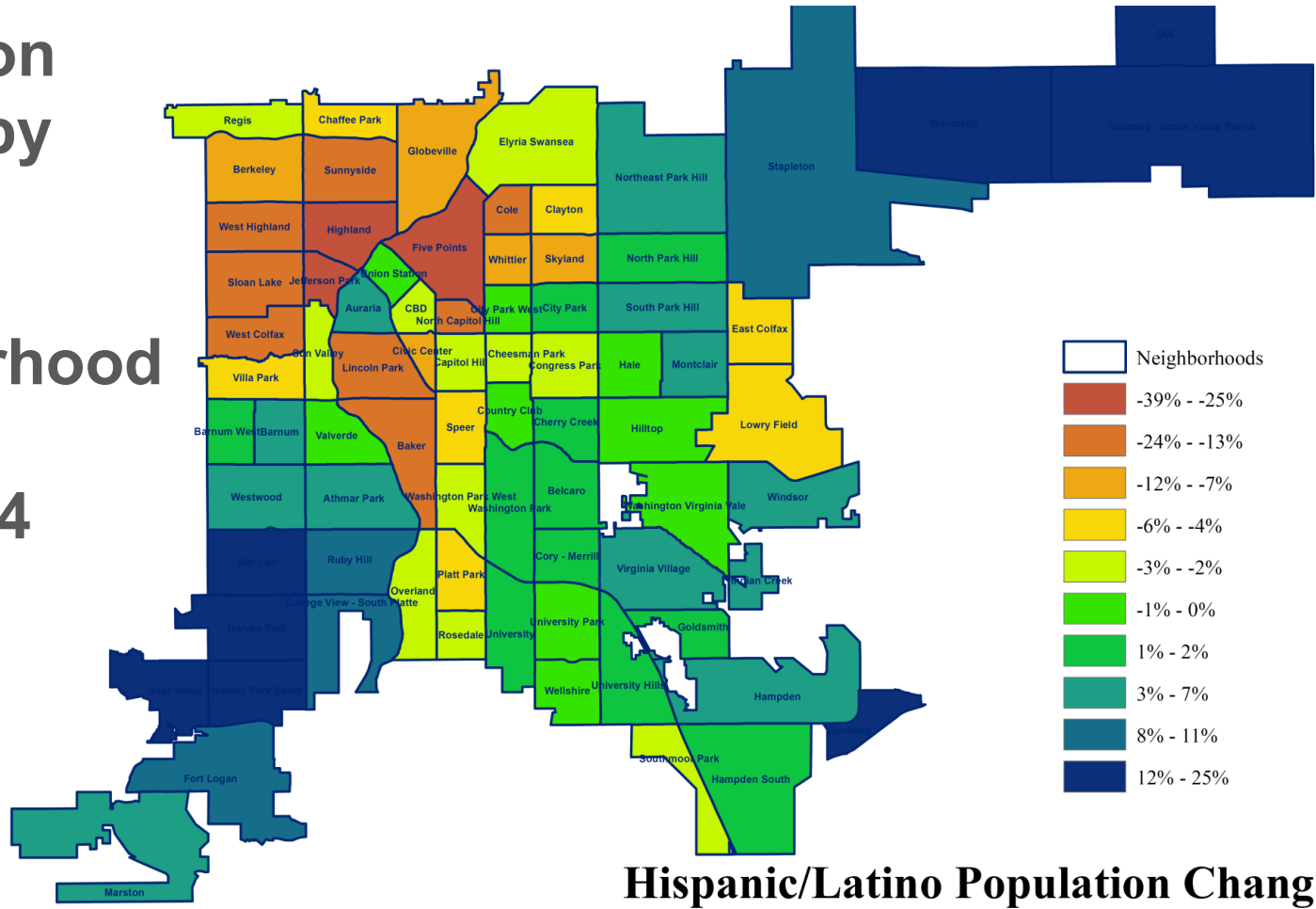


■ Caucasian Population ■ Hispanic Population ■ African American Population

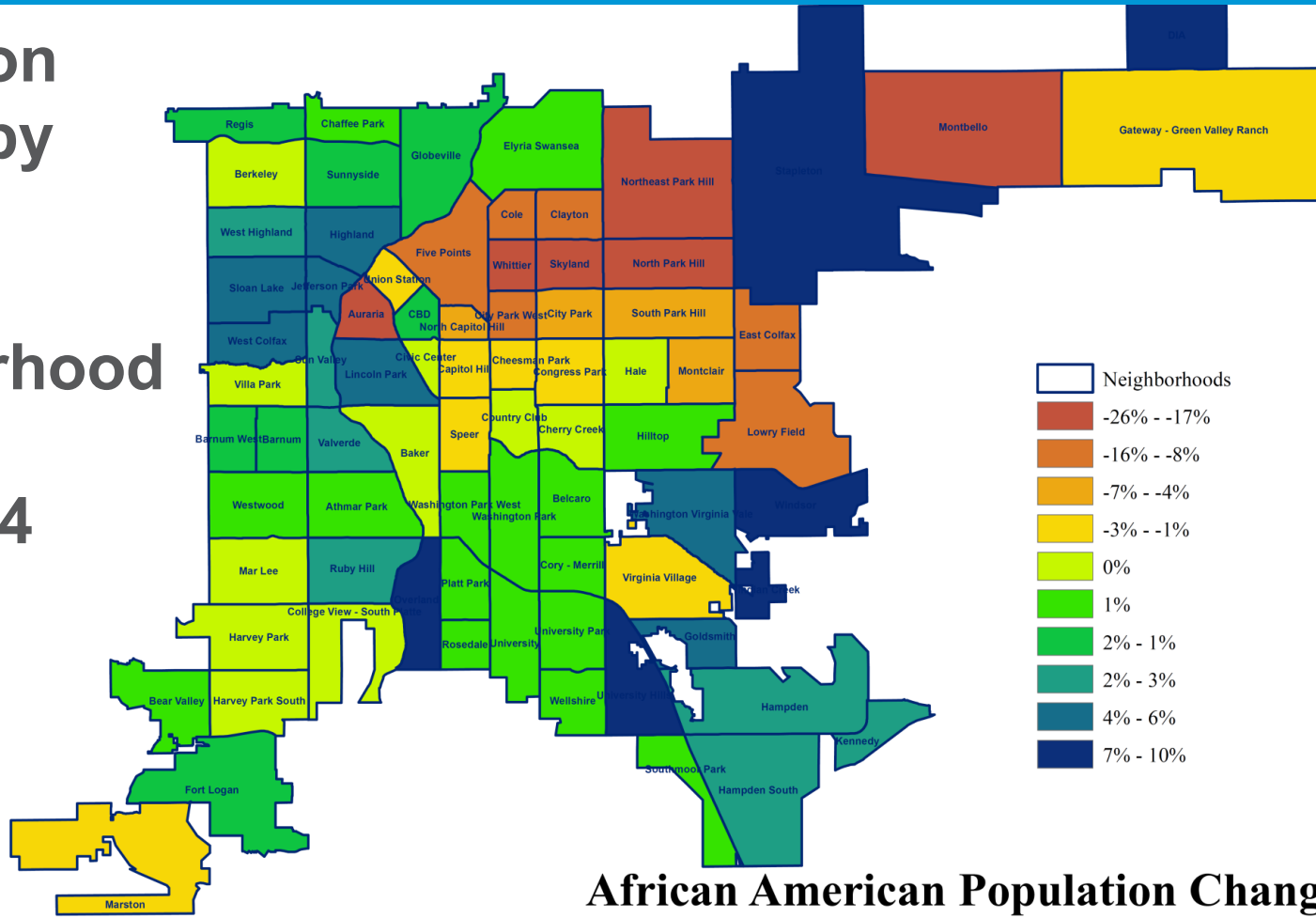
Population Change by Race in Denver Neighborhoods 2000-2014



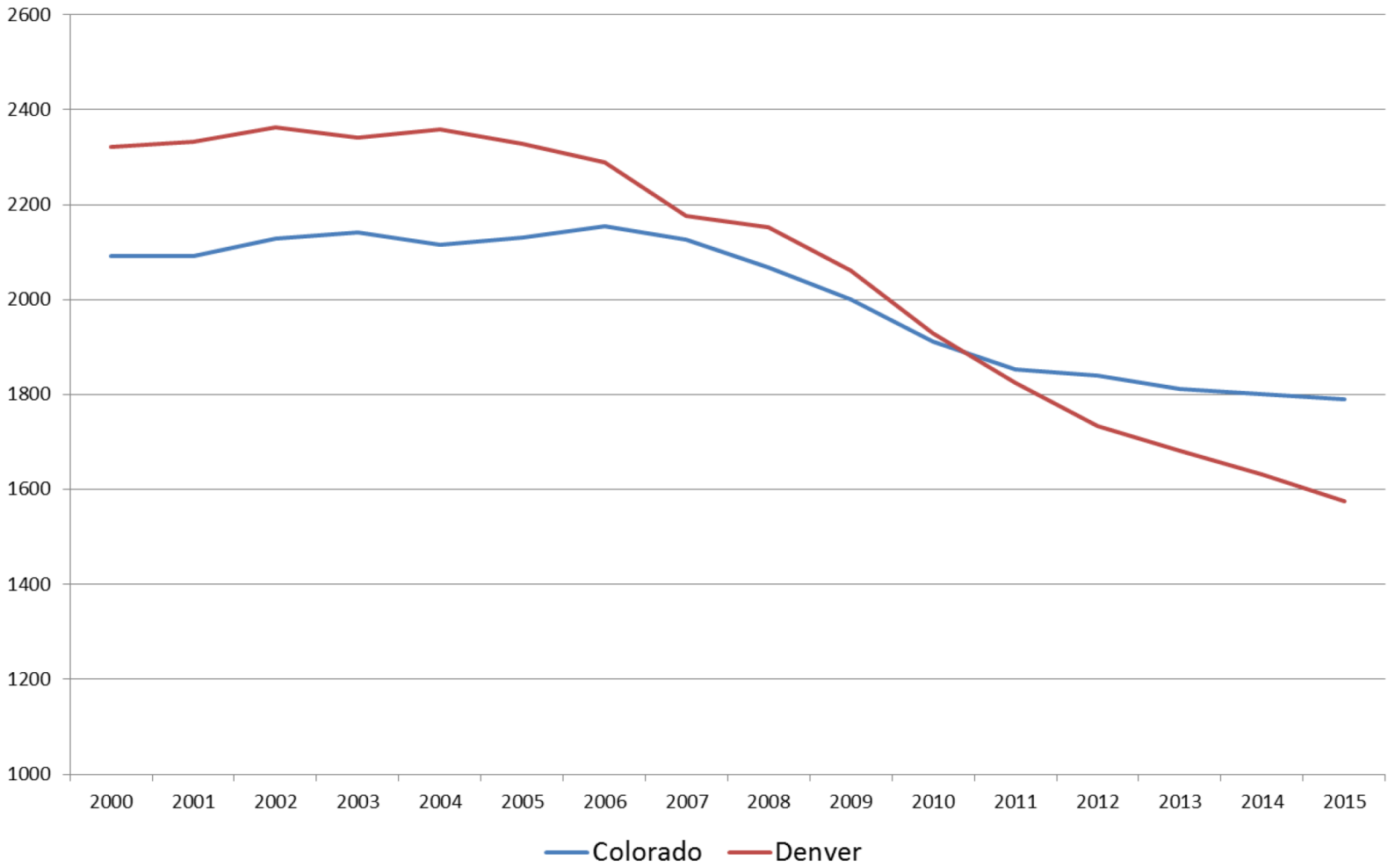
Population Change by Race in Denver Neighborhoods 2000-2014



Population Change by Race in Denver Neighborhoods 2000-2014

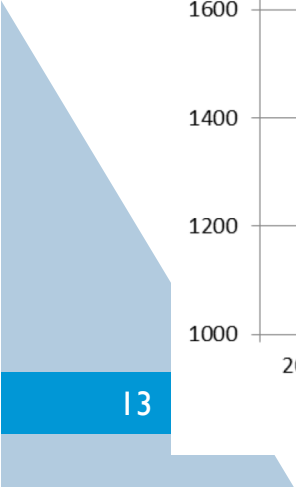


Total Fertility Rate, 2000 - 2015

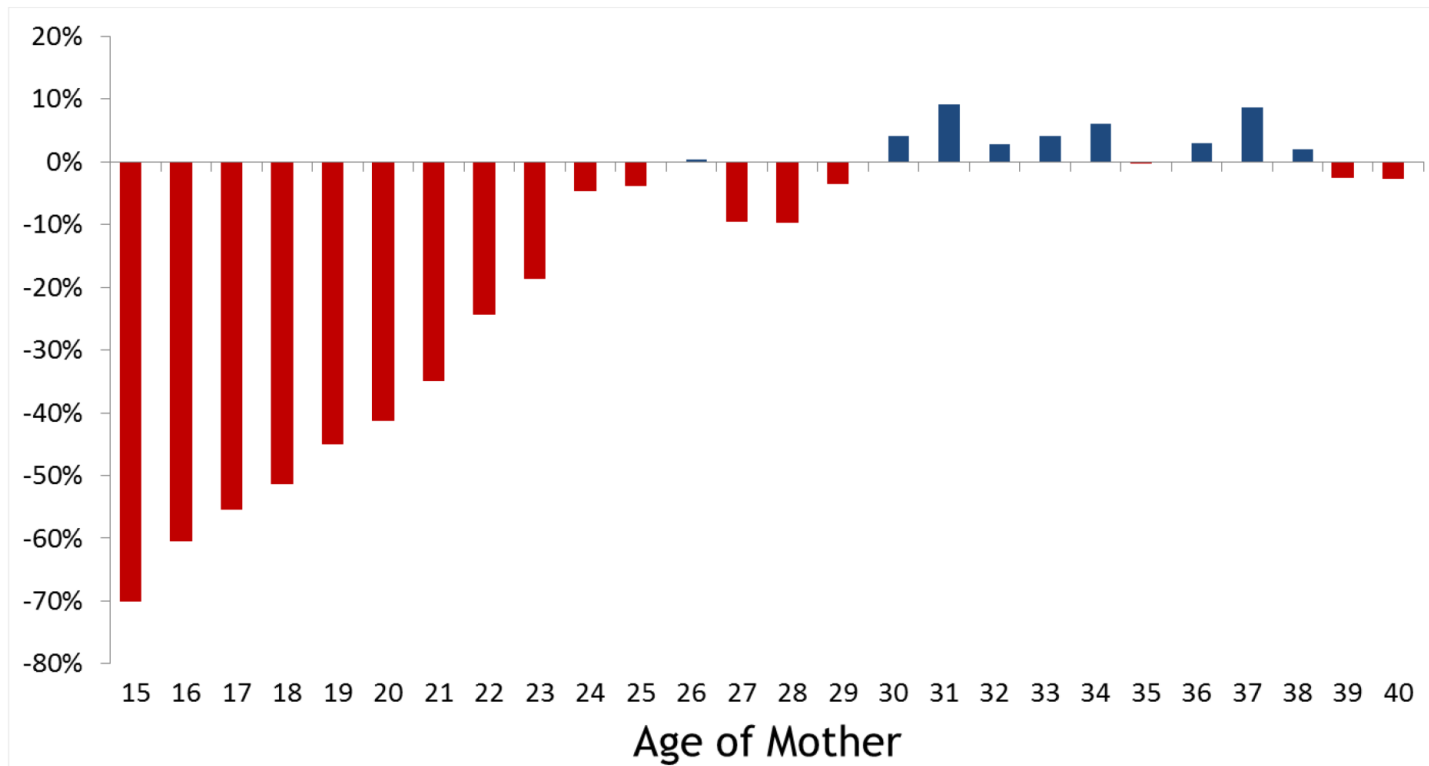


Data Source and Graphic:
Colorado State Demography Office; DOLA

DENVER
THE MILE HIGH CITY

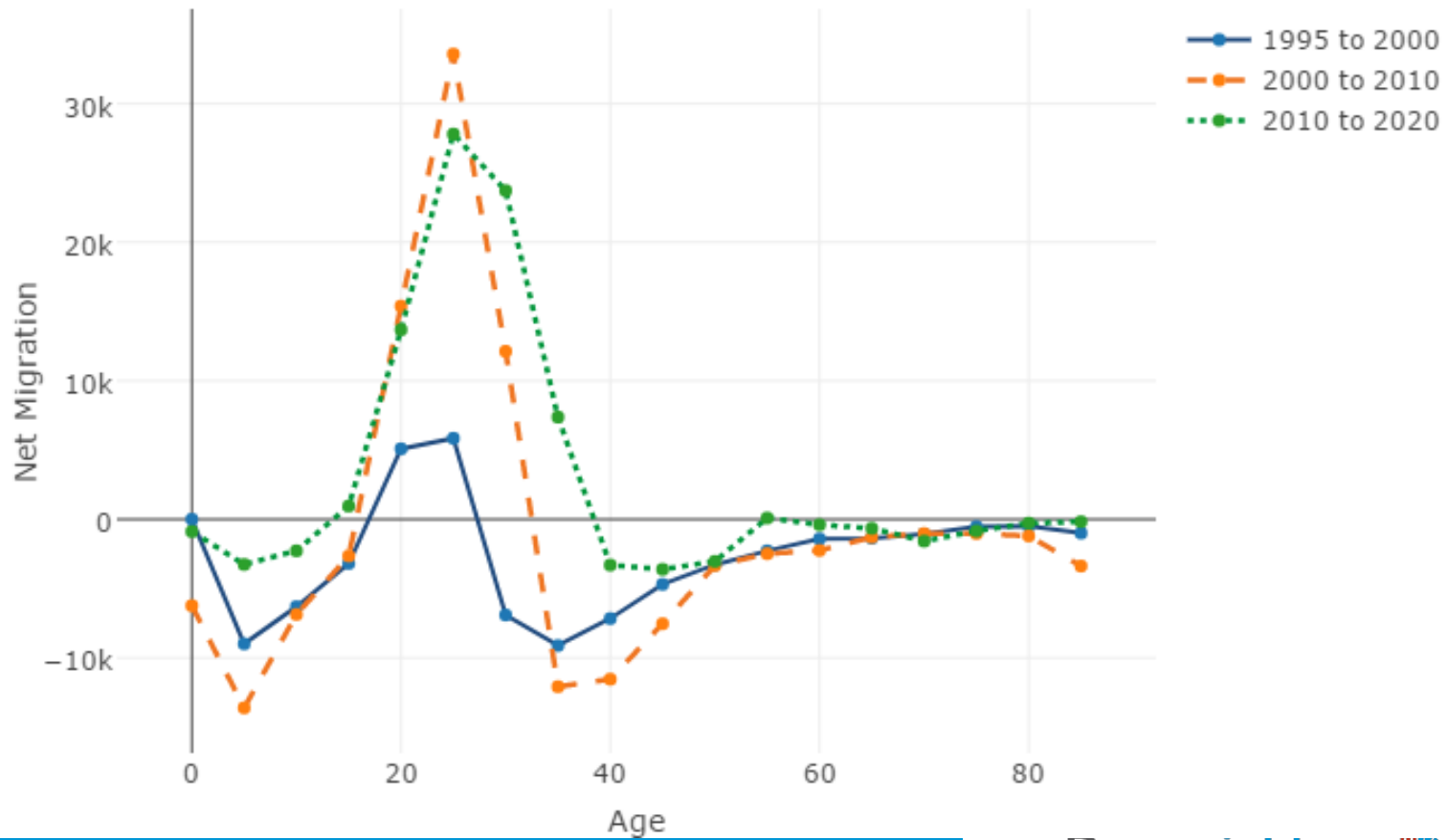


PERCENT CHANGE IN BIRTH RATE BY AGE 2009-15



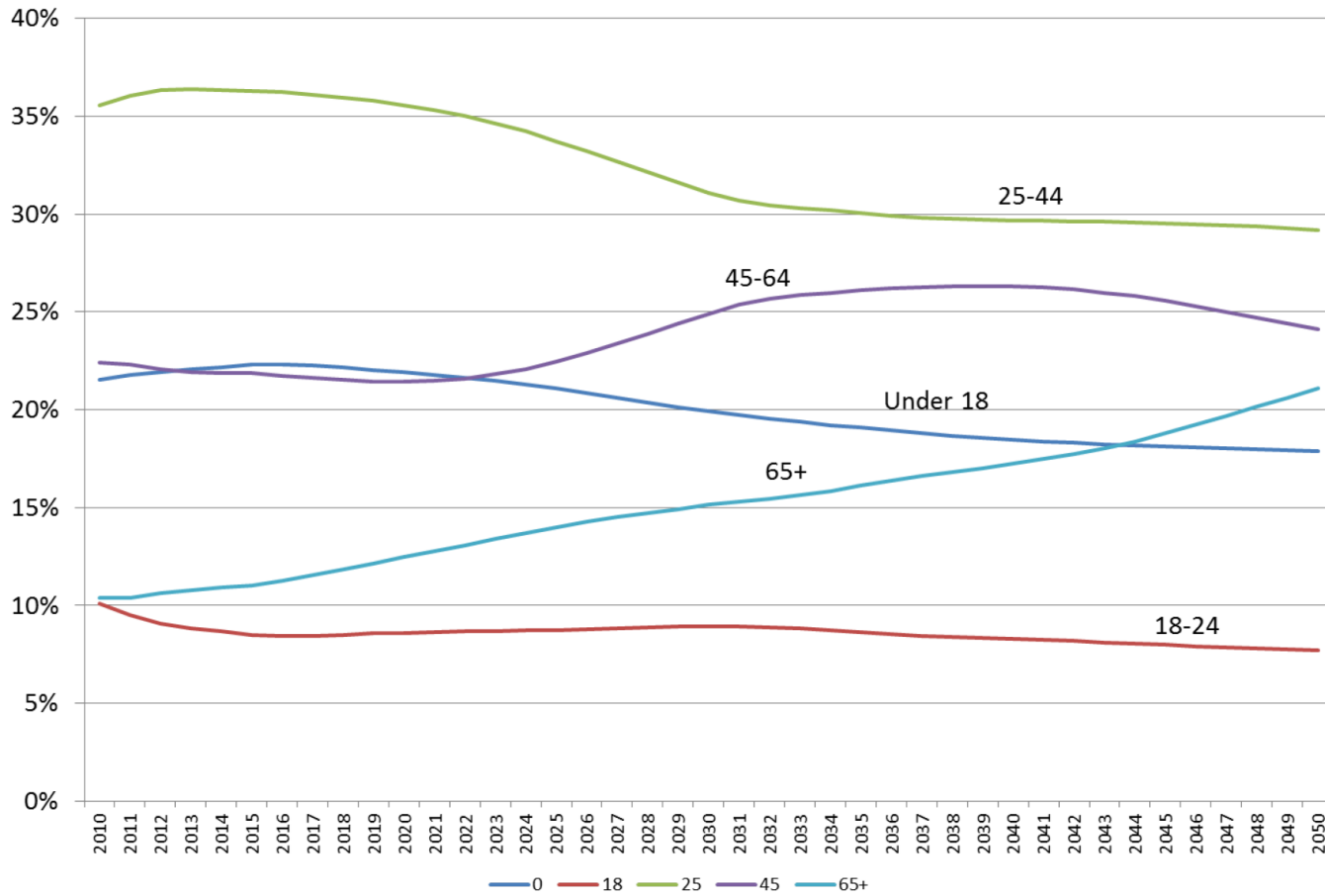
Data Source and Graphic:
Colorado State Demography Office; DOLA

Denver Net Migration by Age



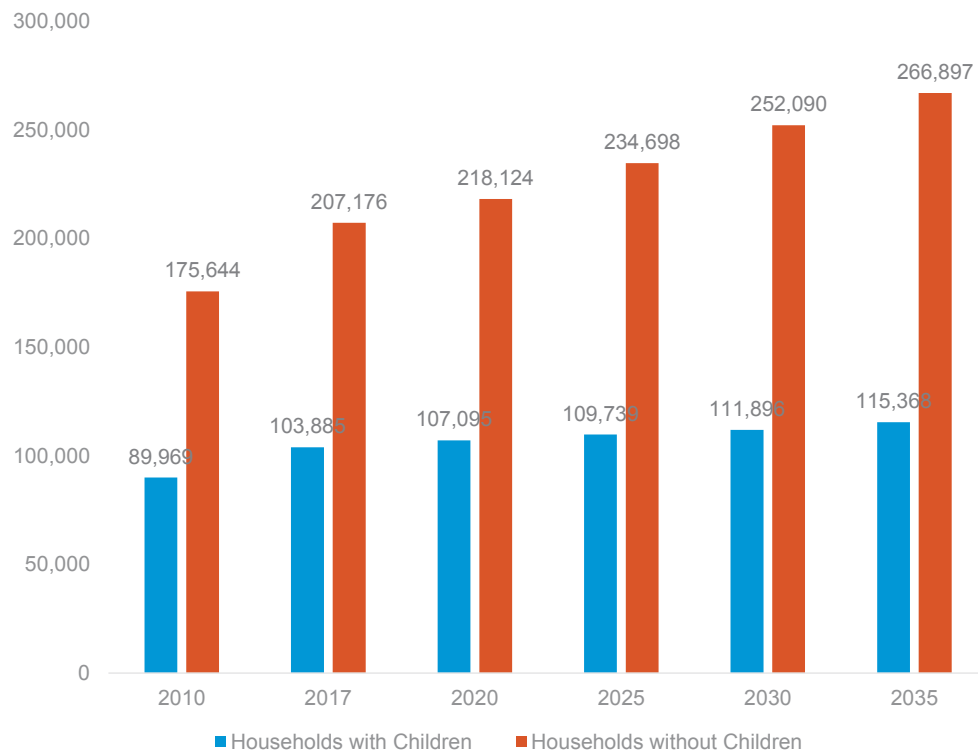
Data Source and Graphic:
Colorado State Demography Office; DOLA

Share of Denver's Population by Age Group



Data Source and Graphic:
Colorado State Demography Office; DOLA

Change in households with children (2010-2035)
Denver, CO



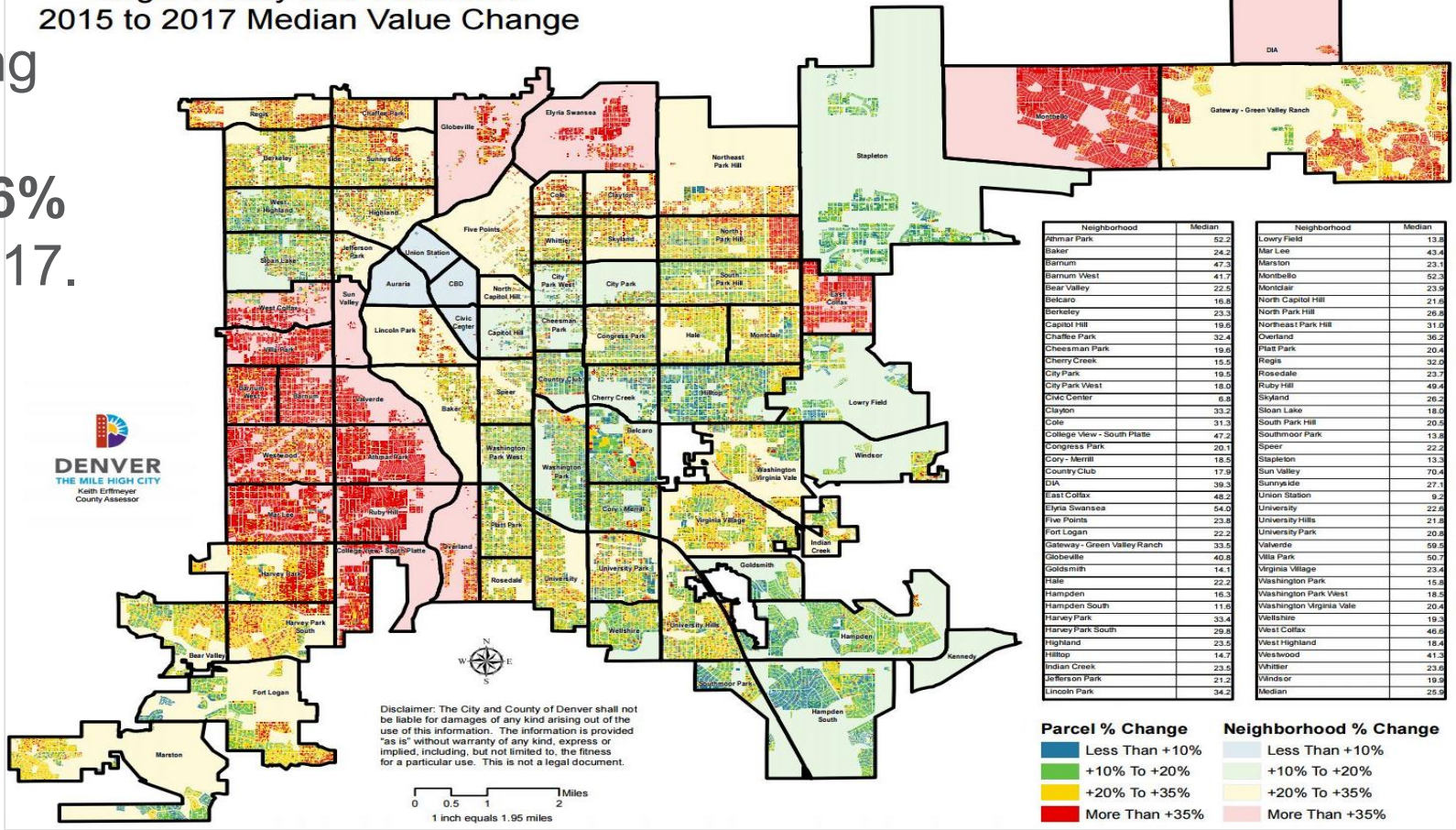
SOURCES: DOLA / CSI

HOUSEHOLD TYPES

- *Denver is becoming a place with smaller households and fewer households with children:*
 - Currently, **one-third of Denver households** have children; these households will increase **11%** by 2035.
 - **Households without children** will grow by **29%** by 2035.
 - **Household size is already smaller** than the national average and is expected to decrease.

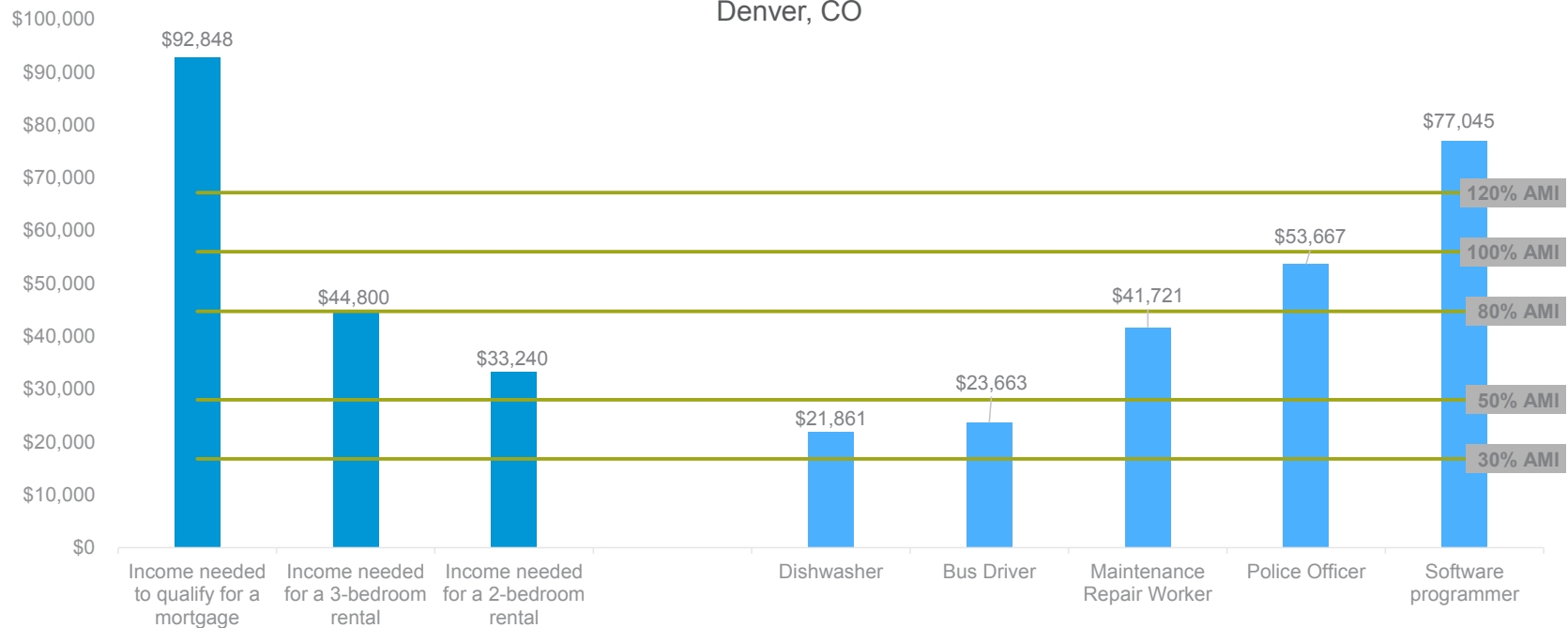
Median values increased among single-unit residential by **26%** from 2015 to 2017.

City & County of Denver
Single Family and Townhome
2015 to 2017 Median Value Change



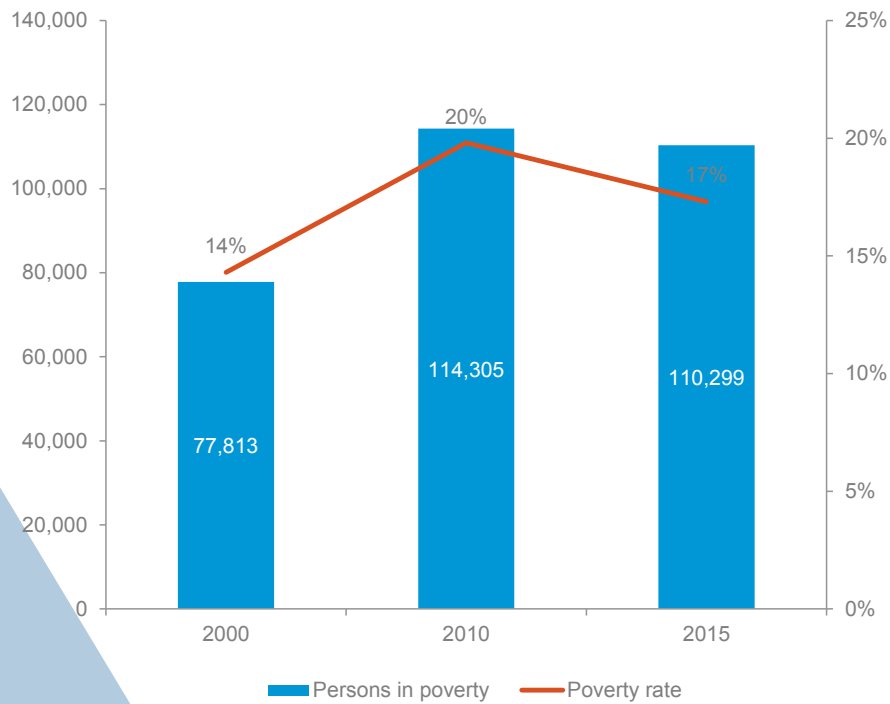
Income and affordability

Incomes for selected occupations compared with housing costs (2015)
Denver, CO



SOURCES: National Paycheck to Paycheck Database - 2015 First Quarter Findings, HUD FY2015 Income Limits and Fair Market Rent Documentation System

Change in persons in poverty (2000-2015)
Denver, CO



SOURCES: 2000 / 2010 U.S. Census Bureau and 2015 American Community Survey

POVERTY

Denver is becoming more prosperous (albeit not for all residents):

- **Poverty declined** among all Denver residents between 2010 and 2015.
- **17 percent** of Denver residents live in poverty—a rate higher than both the state and U.S.

Projected Growth for Denver

*The following Blueprint Denver Growth Scenarios consider three possible growth rates between 2015 and 2040.**

Historical Growth Rates in Denver:

1940-2015: 1.0%

1990-2015: 1.5%

2010-2015: 2.3%

Low Growth Scenario:

0.7% Growth Rate

129k additional residents

124k additional jobs

2040 Population: 812k

Medium Growth Scenario:

0.9% Growth Rate

175k additional residents

135k additional jobs

2040 Population: 857k

High Growth Scenario:

1.4% Growth Rate

254k additional residents

156k additional jobs

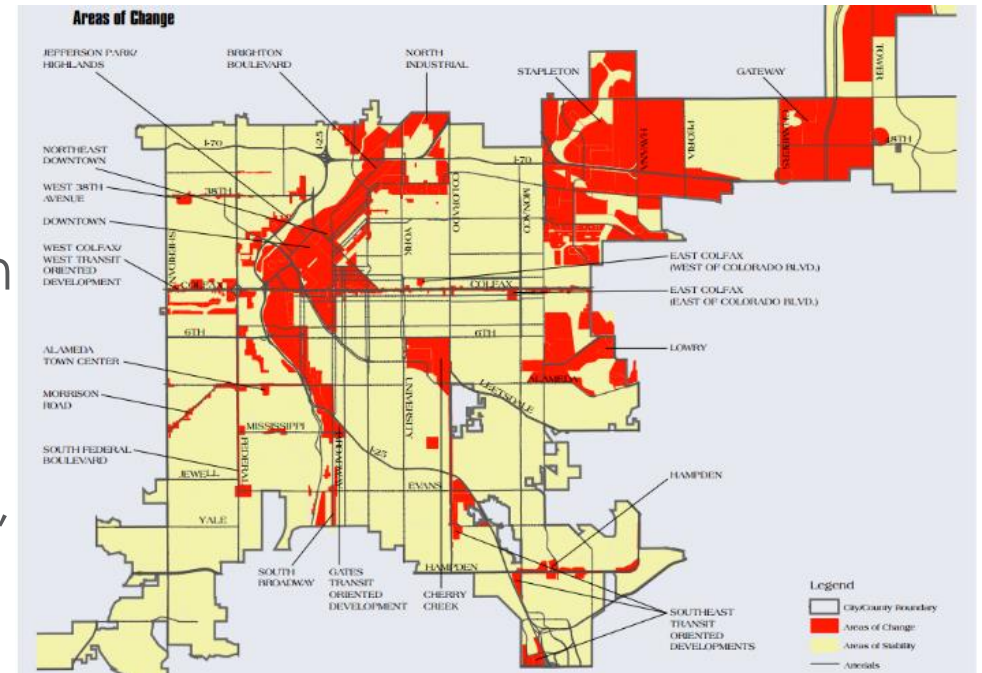
2040 Population: 934k

*Range of probable population, housing and employment growth established for this exercise using DRCOG and DOLA resources.

Denver's Current Strategy

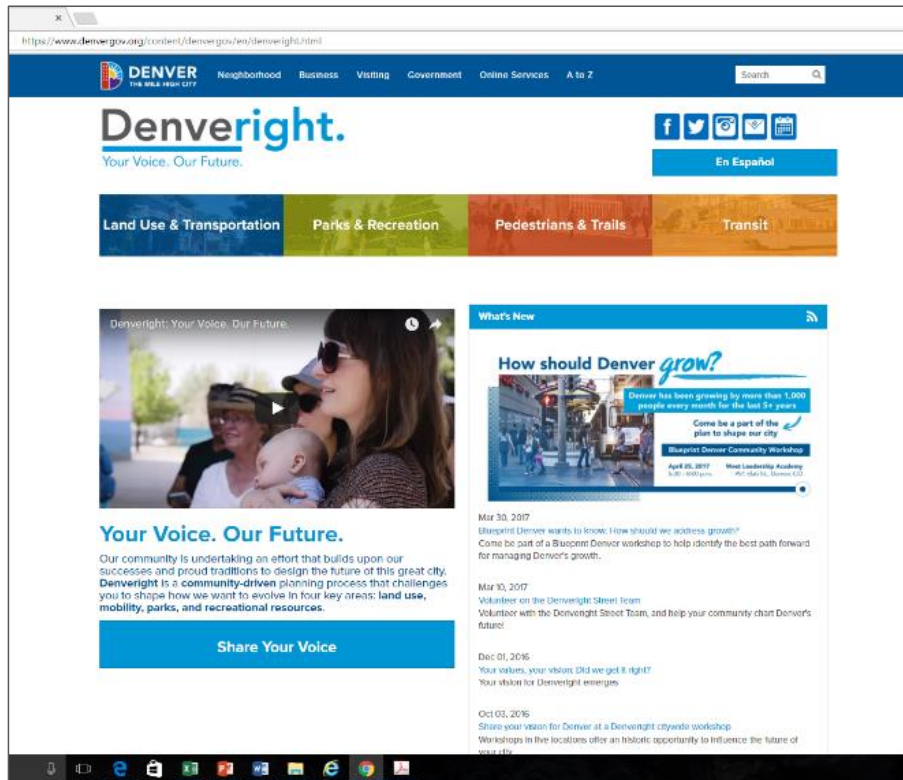
Tools to direct growth to Areas of Change:

- Grow Downtown
- Redevelop Lowry and Stapleton
- Develop remaining green fields
- Transit-Oriented Development (TOD) around FasTracks stations, urban centers and select corridors



Stay Engaged!

www.denvergov.org/denveright



- Sign up for the newsletter
- Check out the meeting calendar
- Late Summer Community Engagement Window:
 - Draft Mapping of Building Blocks/Preferred Growth Scenario
 - August/September Workshops